

Introduction

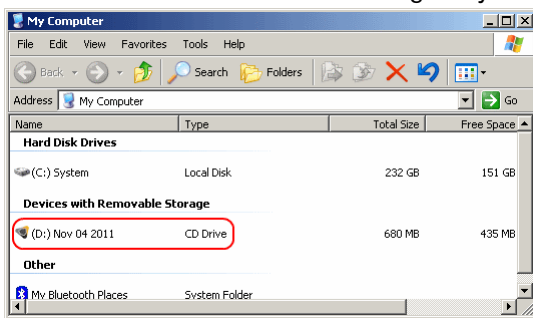
The CS 3D Imaging software application can be used to export a 3D radiographic volume to a CD. This How-To guide describes how to use a CD that contains exported data from the CS 3D Imaging software application.

When the CD export function is used in CS 3D Imaging, a 3D radiographic volume is burned to the CD along with a version of the software for viewing the exported 3D volume. When this CD is inserted into a computer CD drive, you can:

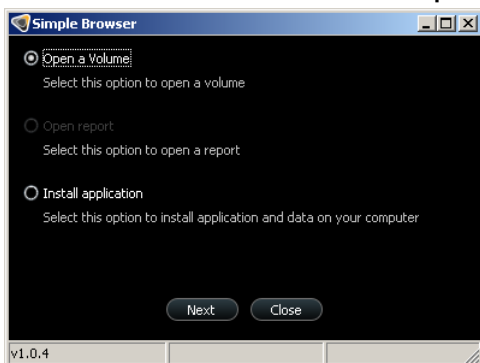
- Open the volume on the CD and run the software (also on the CD).
No data is installed on your computer, but you may experience performance issues using this approach. For this reason when you run the CS 3D Imaging software from the CD, 3D rendering of the volume is not displayed.
- Install the software application and 3D volume on your computer.
This improves performance and allows 3D rendering of the volume to be displayed.

Getting started

1. Insert the export CD into your CD drive, wait for your computer to finish reading the disk.
2. Go to **My Computer**. The export CD is usually labeled with the date that the CD export was created on. You should also see a CS icon alongside your CD drive like this:



3. Double click on the CS icon. The **Simple Browser** selection dialog box is displayed:



4. Select **Open a Volume** to display the exported 3D volume on the CD, or for better performance select **Install application** to install the CS 3D Imaging software application and 3D volume data onto your computer.

Opening a Volume on the CD

The CD contains a version of the CS 3D Imaging software application that you can run from the CD and use to view the 3D volume (also on the CD). This means that no data is transferred to your PC. However due to potential performance issues, when you run the software from the CD, 3D rendering of the volume is not displayed. If you need to see the 3D rendering, use the **Install application** option instead.

To open the volume on the CD, follow these steps:

1. Insert the export CD and double click on the CS icon. The **Simple Browser** selection dialog box is displayed (see [Getting Started](#) above).

2. Select **Open a Volume** and click **Next**. Your computer will start reading data from the CD.

Note: due to the large volume of data that must be read from the CD, this may take a minute or two.

The CS 3D Imaging software application opens displaying the 3D volume on the CD.

3. Use the CS 3D Imaging software to examine the 3D volume on the CD. If you need further information on how to use the application, click the online help icon (**A**):



Note: Running CS 3D Imaging from the CD differs from running the full version as follows:

- No 3D rendering (see **B** in the example shown to the left)
- No Save option – any changes made to a 3D volume cannot be saved
- No Export functionality
- No extracting slices functionality

Installing the application

In order to improve performance, you can install the CS 3D Imaging software and 3D volume data onto your computer.

To install the application and 3D volume data, follow these steps:

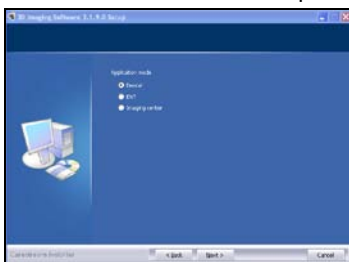
1. Insert the export CD and double click on the CS icon. The **Simple Browser** selection dialog box is displayed (see [Getting Started](#) above).
2. Select **Install application** and click **Next**. This displays a sequence of installation wizard screens.
3. Follow the installation wizard instructions until the installation is complete.

Note: This installs an unlicensed copy of the CS 3D Imaging application. Any functionality requiring a license is not available. Refer to the online help for more information on licensing.

Installation Notes:

You can generally accept the default settings offered by the installation wizard. The following notes describe the installation options where you may need to make a selection:

- The installation wizard will prompt you to select an **Application Mode**:



These three options determine which type of functionality is installed – **Dental**, **ENT** (Ears, Nose and Throat) or **Imaging center** (both Dental and ENT). The default selection is Dental.

- When **Application Mode** “Dental” is selected as shown above, the installation wizard will also prompt you to select an **Application level**:



Select **Advanced** to preset the tools panel in the software to advanced mode. This displays all available functions in the tools panel.

- In addition to prompting you to specify where you would like to install the application, the wizard will also prompt you to specify where you would like to install the 3D volume data.



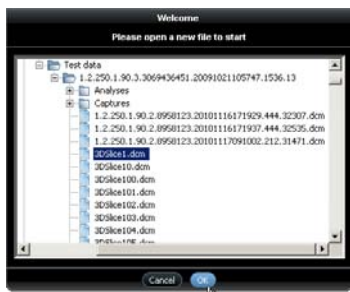
This dialog box is asking you to specify where the 3D volume data should be installed on your computer.

Note: Make sure you remember this location – you will need it when you open the installed 3D volume in the CS 3D Imaging software.

Opening an installed 3D volume

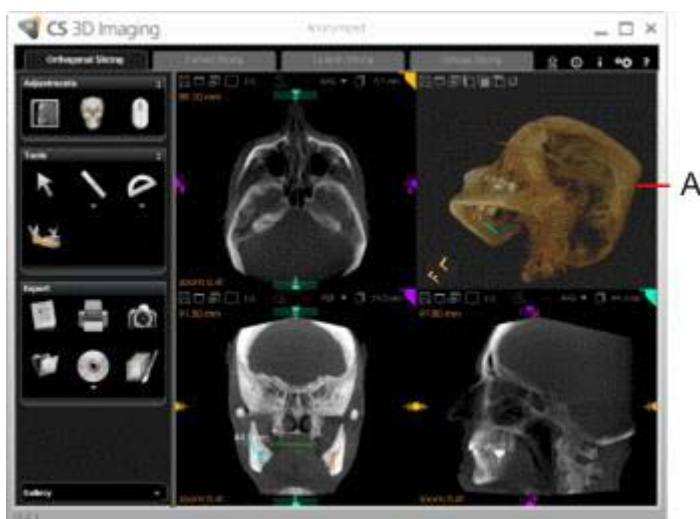
To open an installed 3D volume, follow these steps:

1. On your desktop double click . The **Welcome** dialog box is displayed. Select the 3D volume you want to open:



Use this dialog box to locate the 3D volume you installed on your computer (see bullet point **3** in the [Installation Notes](#) above).

2. Click on a “.DCM” file and click **OK**. The installed 3D volume opens in the CS 3D Imaging software.



Note: In this case, because the software is running on your computer (not on the CD), 3D rendering of the volume is displayed (**A**).